

LEGEND

- COUNTY LINE
- CORPORATE LIMITS
- STATE TRUNKLINE
- COUNTY PRIMARY
- COUNTY LOCAL
- ADJACENT COUNTY
- CITY OR VILLAGE STREET

PRIMARY ROAD SYSTEM IS 18.17 MILES  
 LOCAL ROAD SYSTEM IS 29.88 MILES

I HEREBY CERTIFY THAT THE ROADS SHOWN HEREON BY SYMBOL OR IN RED AS PRIMARY ROADS AND THOSE SHOWN HEREON BY SYMBOL OR IN GREEN AS LOCAL ROADS ARE IN USE AND ARE UNDER THE JURISDICTION OF THE COUNTY ROAD COMMISSION.

CHAIRMAN \_\_\_\_\_ DATE \_\_\_\_\_

SCALE 0 1/4 1/2 1 MILE  
 One Inch Equals 3000 Ft.

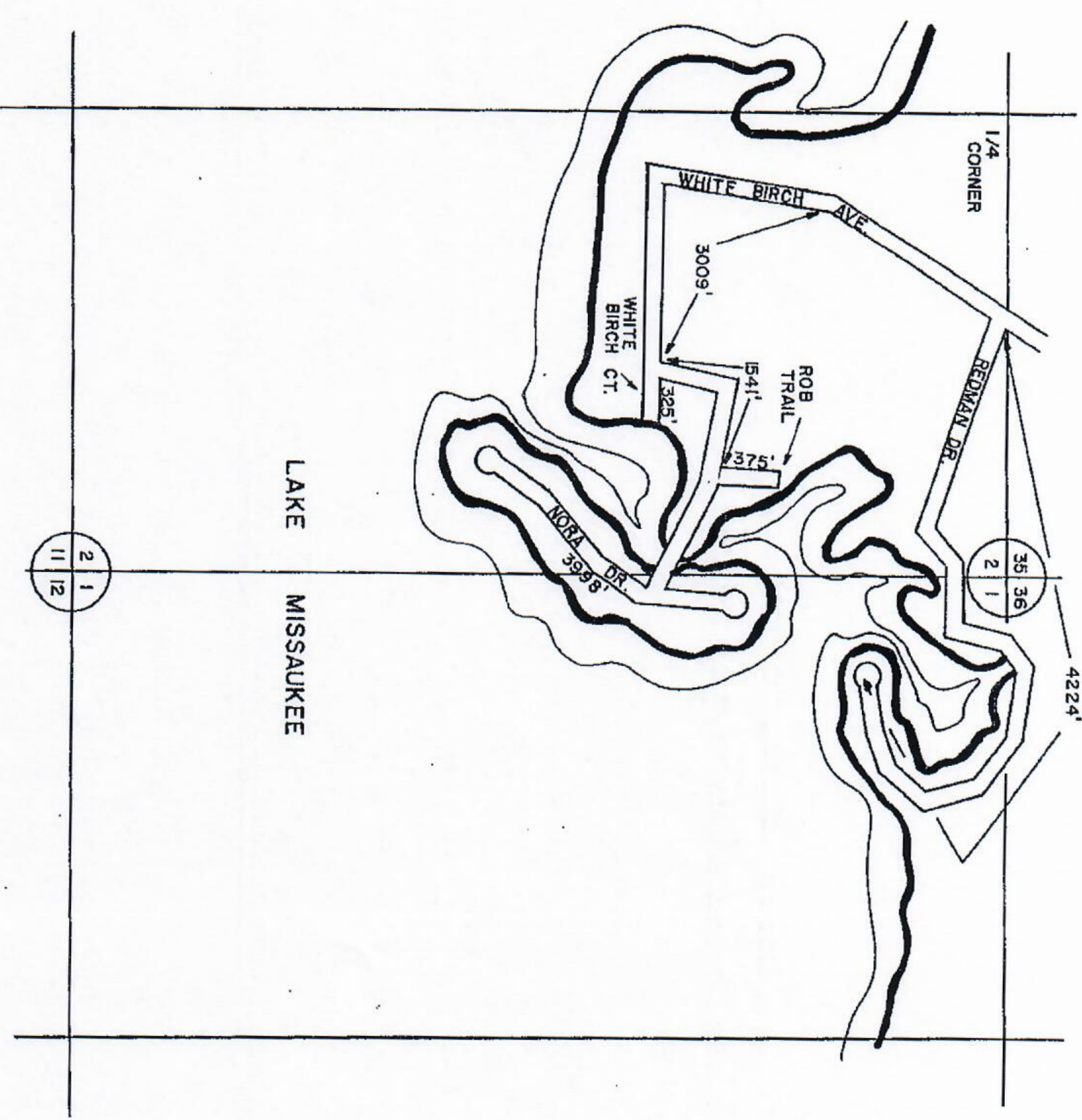


Prepared by

LAKE TWP  
 T 22 N - R 8 W  
 MISSAUKEE CO.

13	14	15	16
9	10	11	12
6	7	8	
1	2	3	4

CLAYTON'S HARBOR, REDMANS ISLE

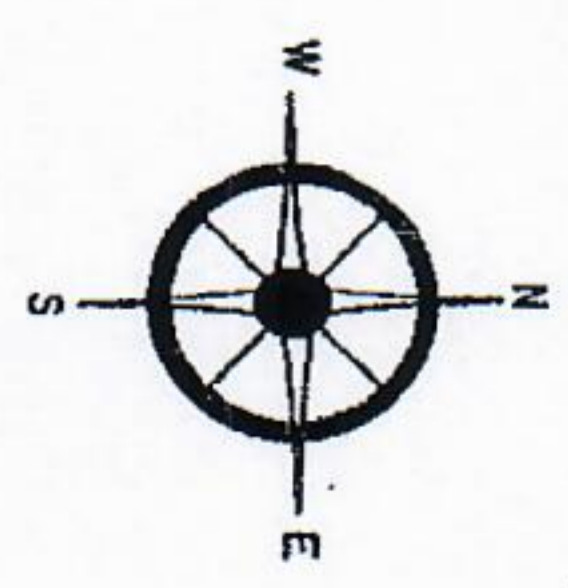


- COUNTY LINE
- CORPORATE LIMITS
- STATE TRUNKLINE
- COUNTY PRIMARY
- COUNTY LOCAL
- ADJACENT COUNTY
- CITY OR VILLAGE
- STREET

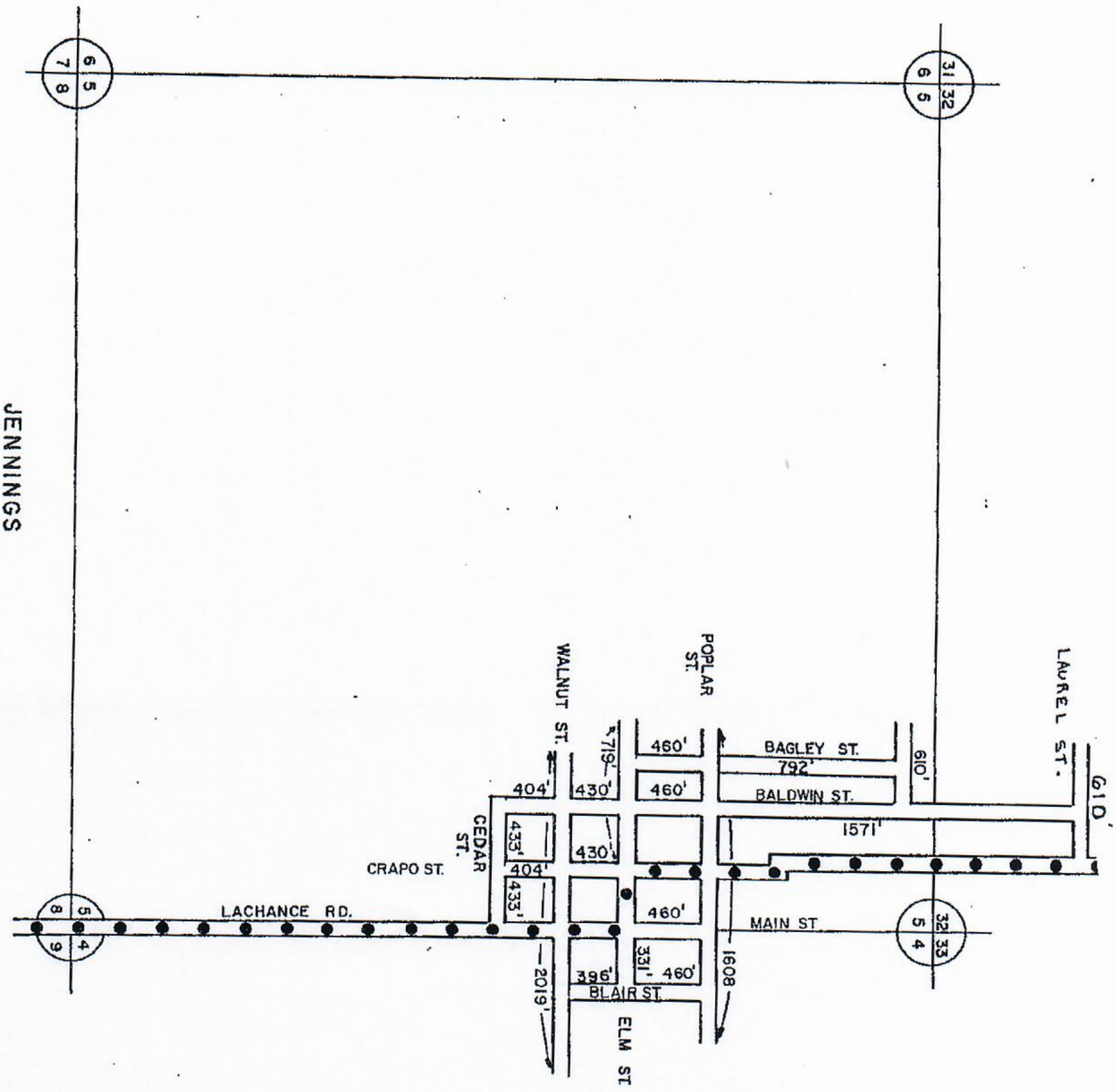
TOTAL FEET 13422 EQUALS 2.54 M

I HEREBY CERTIFY THAT THE ROADS SHOWN HEREON BY SYMBOL OR IN GREEN AS LOCAL ROADS ARE IN USE AND ARE UNDER THE JURISDICTION OF THE COUNTY ROAD COMM.

CHAIRMAN \_\_\_\_\_ DATE \_\_\_\_\_



TOWNSHIP LAKE  
 SECTION 18.2 T22N R3W  
 COUNTY MISSAUKEE

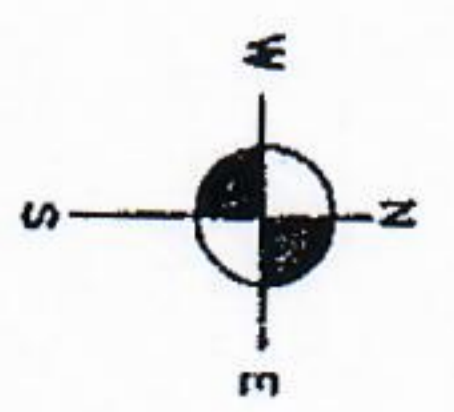


LEGEND

- COUNTY LINE
- CORPORATE LIMITS
- STATE TRUNKLINE
- COUNTY PRIMARY
- COUNTY LOCAL
- ADJACENT COUNTY
- CITY OR VILLAGE STREET.

TOTAL FT. 13030 EQUALS 2.47 MI.

I HEREBY CERTIFY THAT THE ROADS SHOWN HEREON BY SYMBOL ARE IN USE AND ARE UNDER THE JURISDICTION OF THE COUNTY ROAD COMMISSION.



SCALE 0 600 1200 FT.

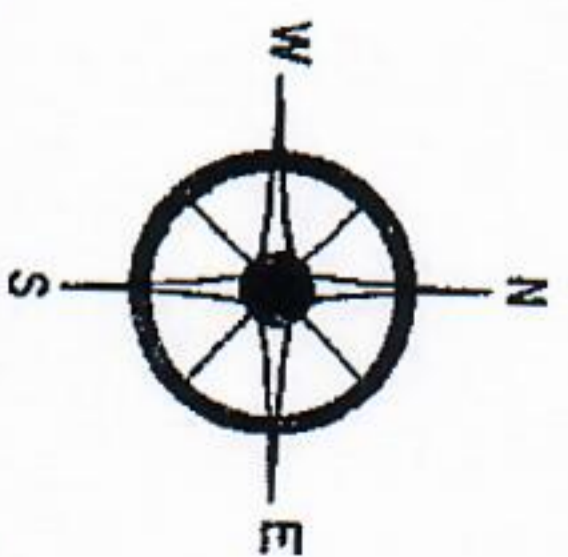
TOWNSHIP LAKE  
SECTION 5 T. 22 N. R. 8 W.  
COUNTY MISSAUKEE

COUNTY LINE  
 CORPORATE LIMITS  
 STATE TRUNKLINE  
 COUNTY PRIMARY  
 COUNTY LOCAL  
 ADJACENT COUNTY  
 CITY OR VILLAGE  
 STREET

TOTAL FEET 10906.4 EQUALS 2.07 MILES

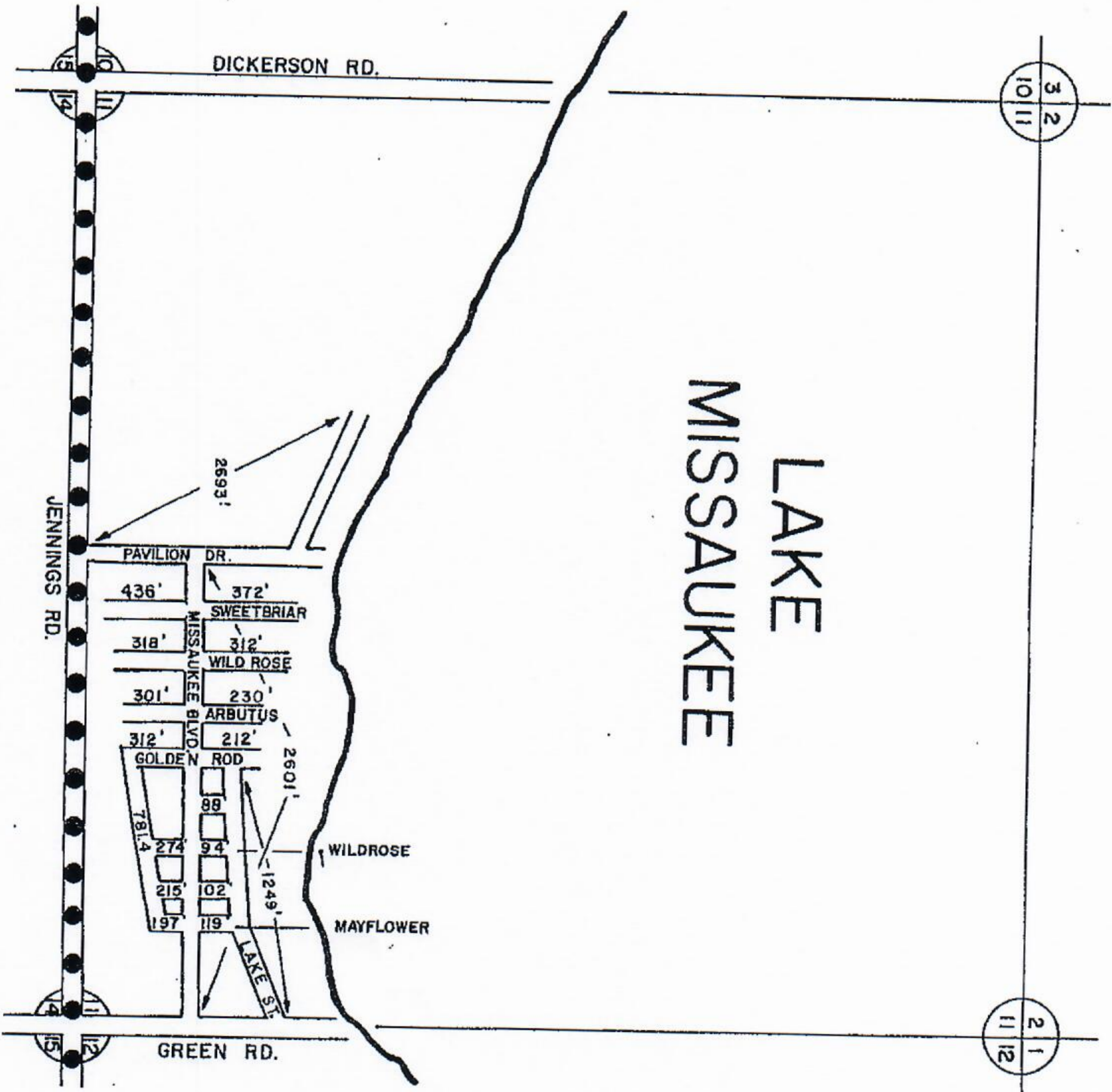
I HEREBY CERTIFY THAT THE ROADS SHOWN HEREON BY SYMBOL OR IN GREEN AS LOCAL ROADS ARE IN USE AND ARE UNDER THE JURISDICTION OF THE COUNTY ROAD COMMISSION.

CHAIRMAN \_\_\_\_\_ DATE \_\_\_\_\_

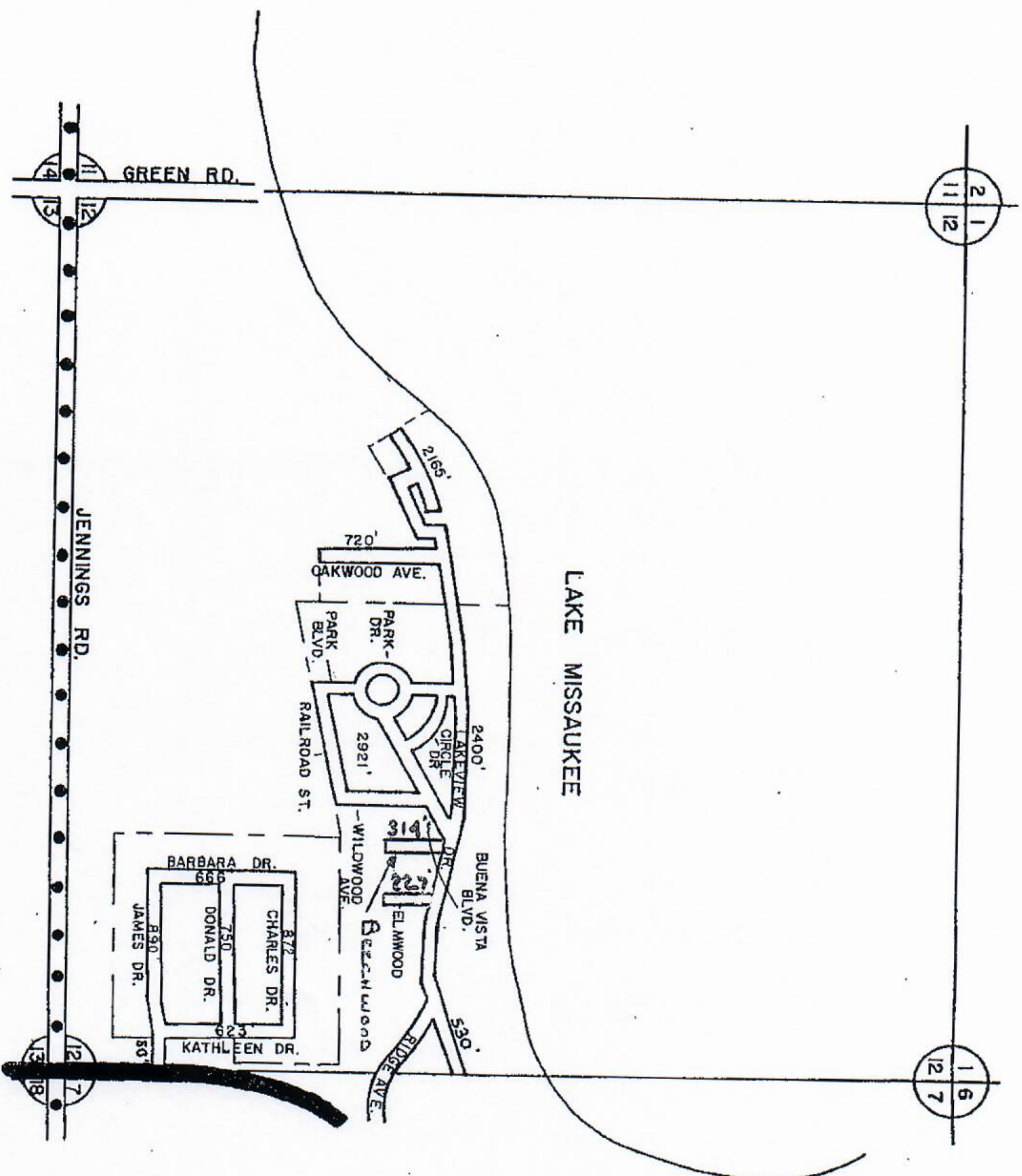


SCALE 0 1200 FEET  
 ONE INCH EQUALS 600 FT.

TOWNSHIP LAKE  
 SECTION 11 T. 22N. R. 8W  
 COUNTY MISSAUKEE



MISSAUKEE PARK



BUENA VISTA PARK  
 &  
 LAKE ESTATES

2 1  
 11 12

1 6  
 12 7

LEGEND  
 COUNTY LINE  
 CORPORATE LIMITS  
 STATE TRUNKLINE  
 COUNTY PRIMARY  
 COUNTY LOCAL  
 ADJACENT COUNTY  
 CITY OR VILLAGE  
 STREET

TOTAL FEET 3128 EQUALS 2.49 MILES

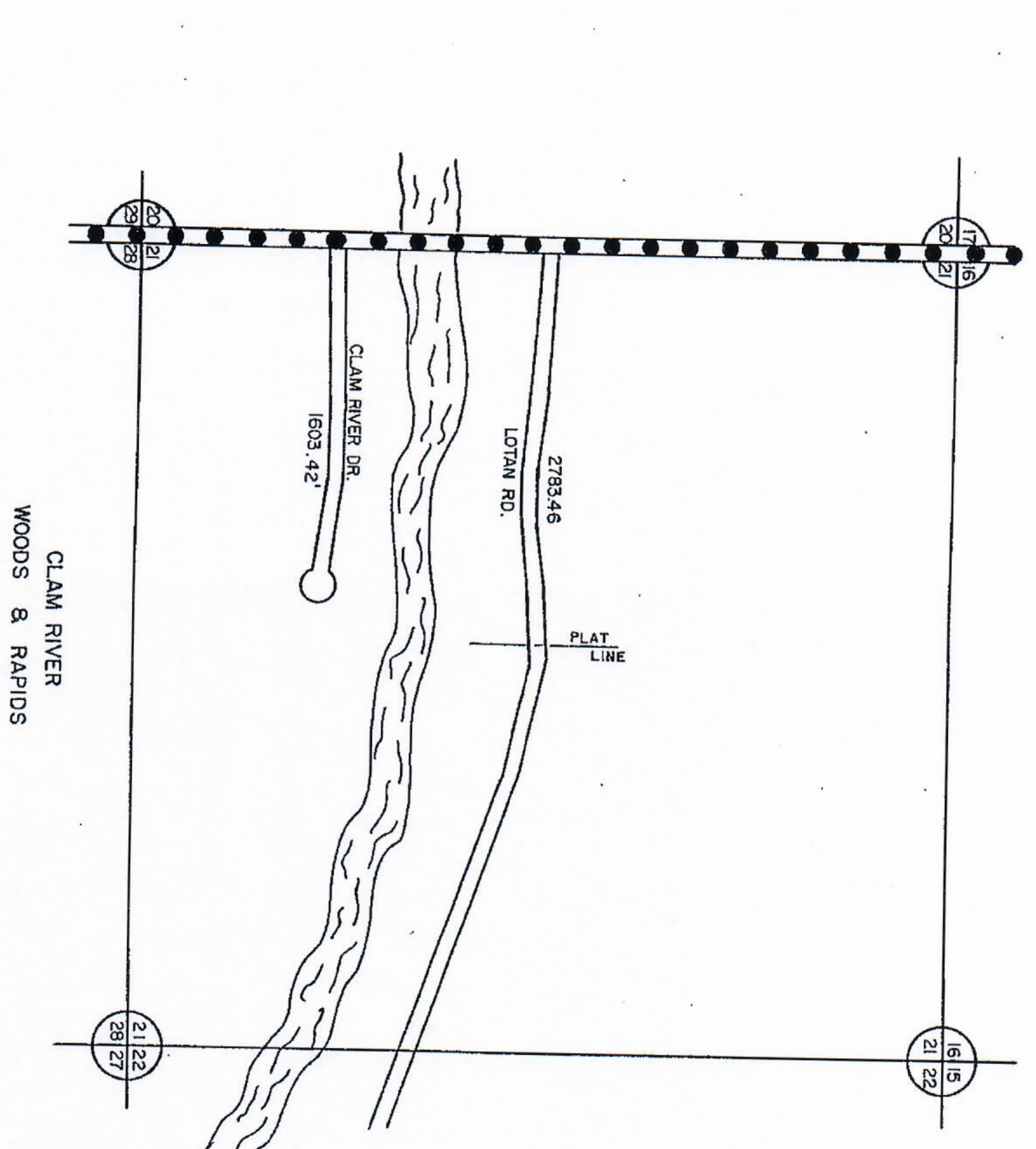
I HEREBY CERTIFY THAT THE ROADS SHOWN HEREON BY SYMBOL OR IN GREEN AS LOCAL ROADS ARE IN USE AND ARE UNDER THE JURISDICTION OF THE COUNTY ROAD COMMISSION.

CHAIRMAN \_\_\_\_\_ DATE \_\_\_\_\_



SCALE 0 400 1200 FEET  
 One inch equals 400 feet

TOWNSHIP LAKE  
 SECTION 12 T. 22N. R. 8W  
 COUNTY MISSAUKEE

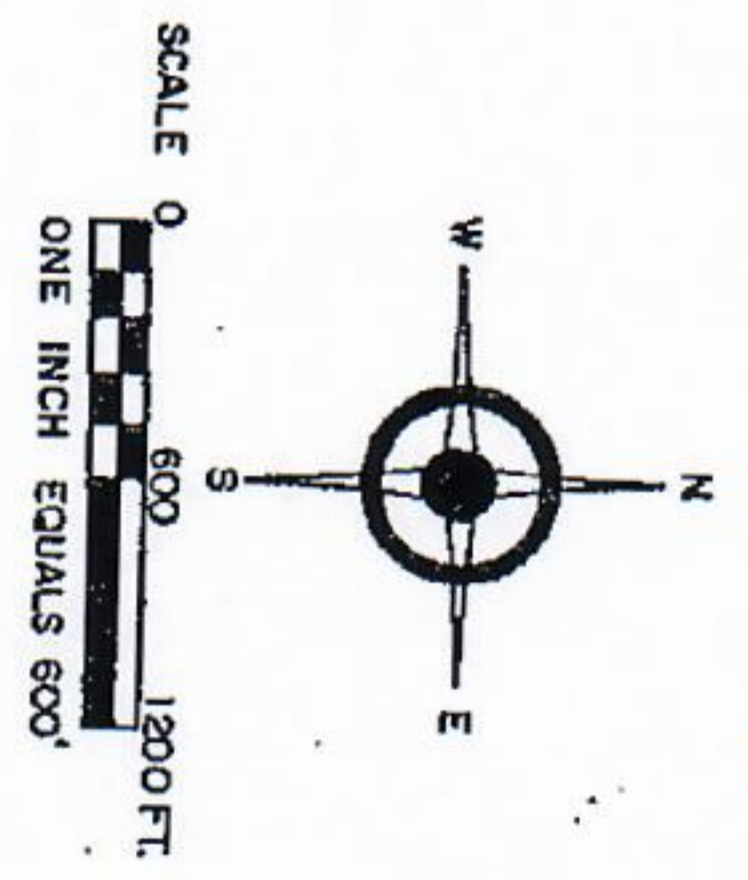


COUNTY LINE  
 CORPORATE LIMITS  
 STATE TRUNKLINE  
 COUNTY PRIMARY  
 COUNTY LOCAL  
 ADJACENT COUNTY  
 CITY OR VILLAGE  
 STREET.

TOTAL FEET 4386.88 EQUALS .83 MI.

I HEREBY CERTIFY THAT THE ROADS SHOWN HEREON BY SYMBOL AS LOCAL ROADS ARE IN USE AND ARE UNDER THE JURISDICTION OF THE COUNTY ROAD COMMISSION.

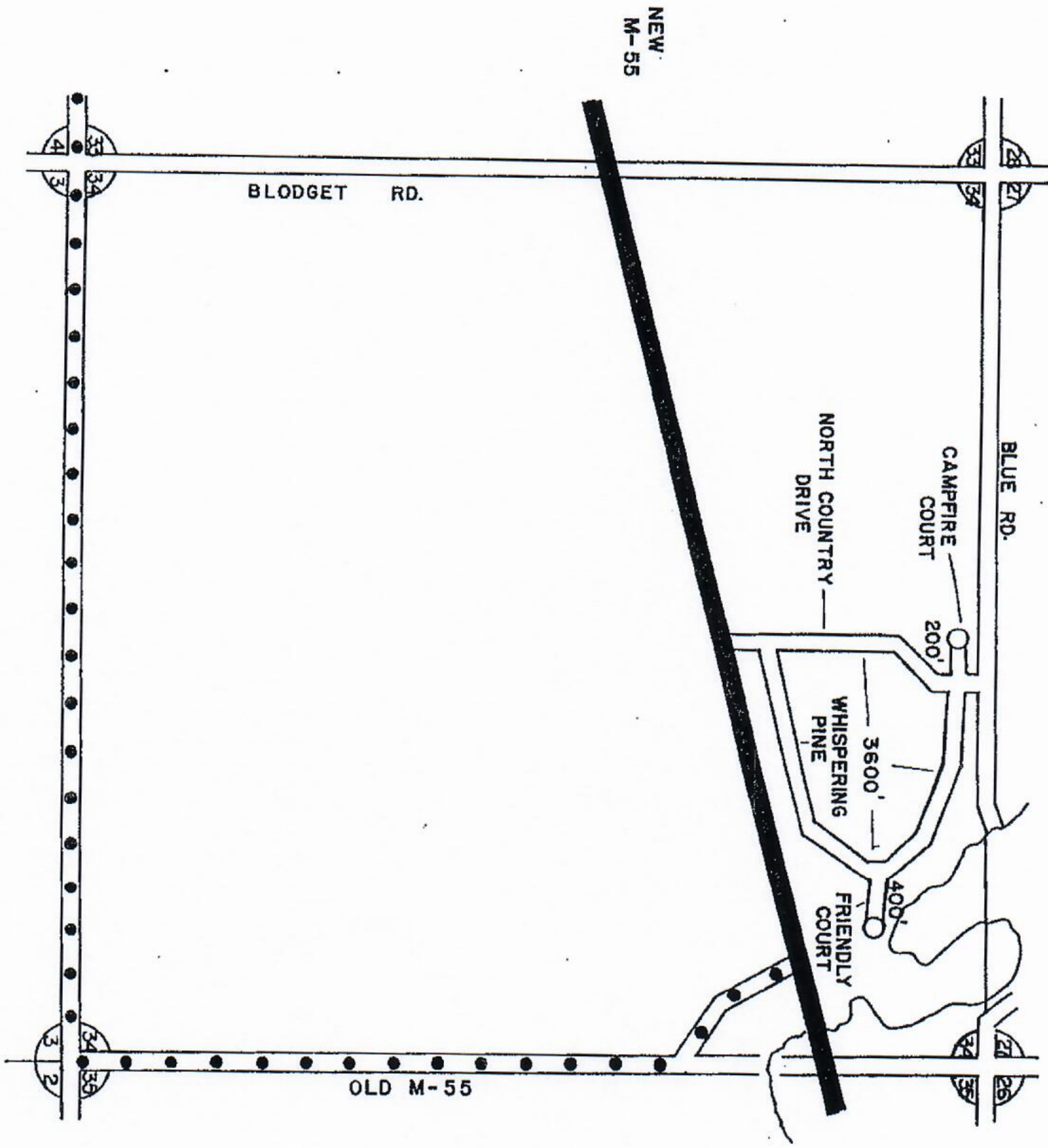
CHAIRMAN \_\_\_\_\_ DATE \_\_\_\_\_



TOWNSHIP LAKE  
 SECTION 21 T22N R8W  
 COUNTY MISSAUIKEE

SE

NORTH COUNTRY SUBDIVISION



LEGEND

- COUNTY LINE
- CORPORATE LIMITS
- STATE TRUNKLINE
- COUNTY PRIMARY
- COUNTY LOCAL
- ADJACENT COUNTY
- CITY OR VILLAGE
- STREET

TOTAL FEET 4,200' EQUALS .80 MILES

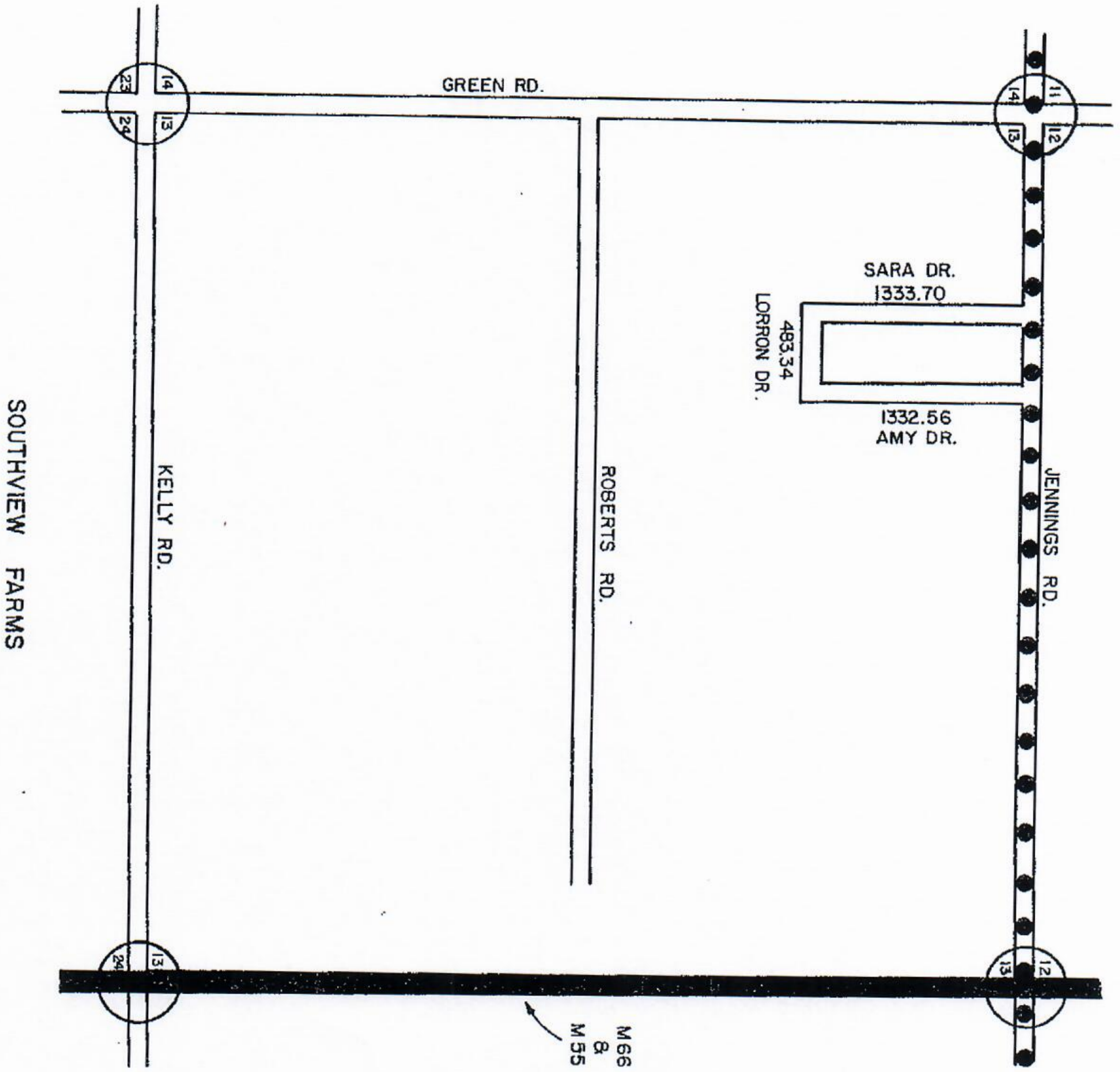
I HEREBY CERTIFY THAT THE ROADS SHOWN HEREON BY SYMBOL OR IN GREEN AS LOCAL ROADS ARE IN USE AND ARE UNDER THE JURISDICTION OF THE COUNTY ROAD COMMISSION.

CHAIRMAN \_\_\_\_\_ DATE \_\_\_\_\_



SCALE 0 400 1200 FEET  
One Inch equals 400 feet

TOWNSHIP LAKE  
SECTION 34 T. 22 N. R. 9 W.  
COUNTY MISSAUKEE



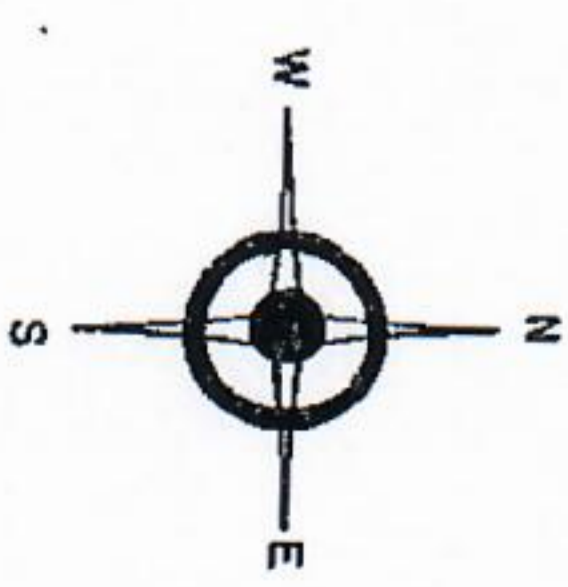
SOUTHVIEW FARMS

COUNTY LINE  
 CORPORATE LIMITS  
 STATE TRUNKLINE  
 COUNTY PRIMARY  
 COUNTY LOCAL  
 ADJACENT COUNTY  
 CITY OR VILLAGE  
 STREET

TOTAL FEET 3150 EQUALS .60 MI.

I HEREBY CERTIFY THAT THE ROADS SHOWN HEREON BY SYMBOL AS LOCAL ROADS ARE IN USE AND ARE UNDER THE JURISDICTION OF THE COUNTY ROAD COMMISSION.

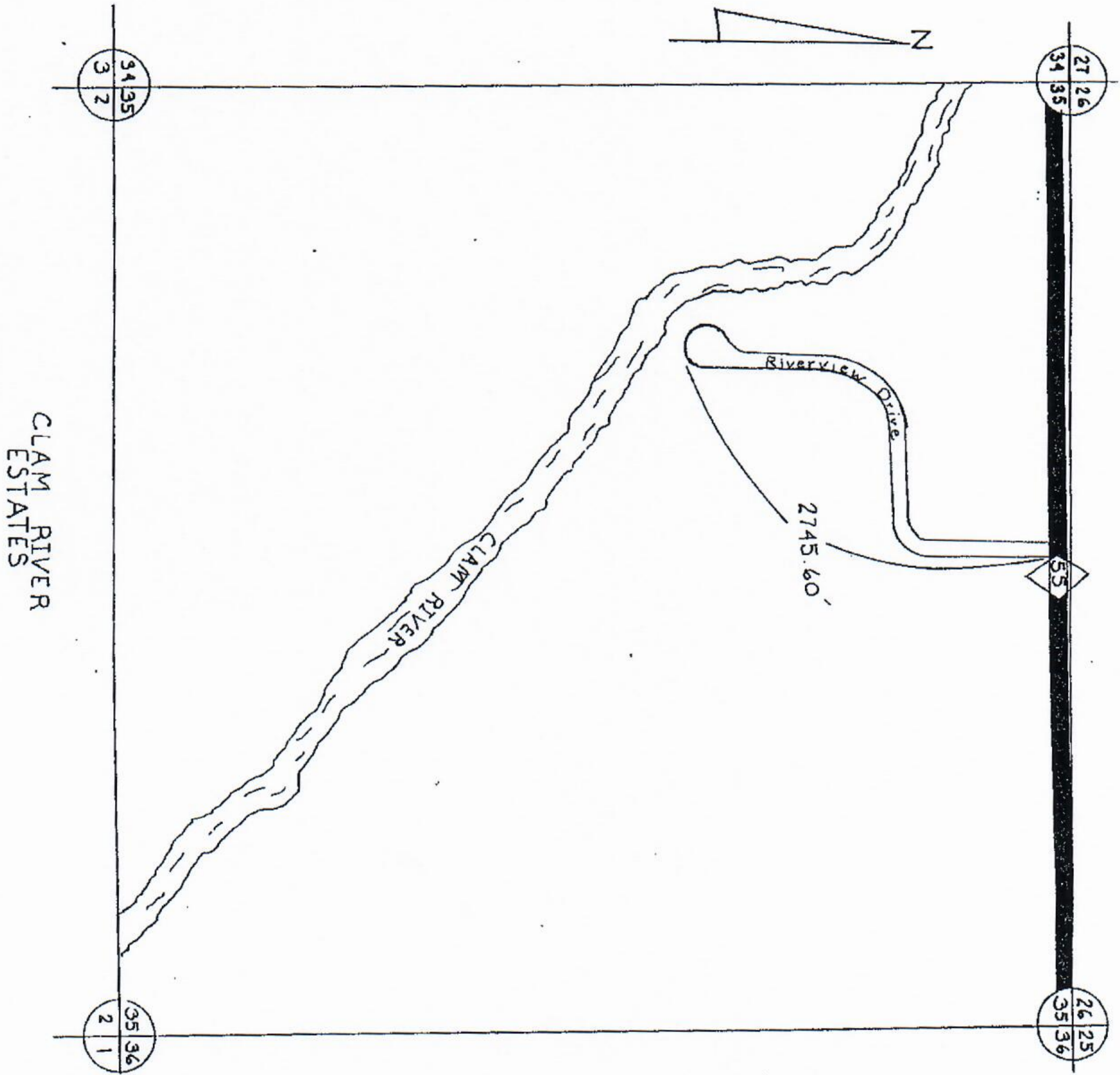
CHAIRMAN \_\_\_\_\_ DATE \_\_\_\_\_



SCALE 0 600 1200 FT.  
 ONE IN. EQUALS 600 FT.

TOWNSHIP LAKE  
 SECTION 13 T21N R8W  
 COUNTY MISSAUKEE





CLAM RIVER  
ESTATES

27 26  
34 35

26 25  
35 36

34 35  
3 2

35 36  
2 1

Riverview Drive

2745.60'

CLAM RIVER

55

STATE TOWNSHIP  
COUNTY PRIMARY  
COUNTY LOCAL  
ADJACENT COUNTY  
CITY OR VILLAGE  
STREET

TOTAL FEET 2745.60, EQUALS .52 MILES

I HEREBY CERTIFY THAT THE ROADS SHOWN HEREON BY SYMBOL OR IN GREEN AS LOCAL ROADS ARE IN USE AND ARE UNDER THE JURISDICTION OF THE COUNTY ROAD COMMISSION.

CHAIRMAN DATE











SCALE 0 600 1200 FEET  
One inch equals 600 feet

TOWNSHIP LAKE  
SECTION 35 T. 22N R. 8W  
COUNTY Missoula



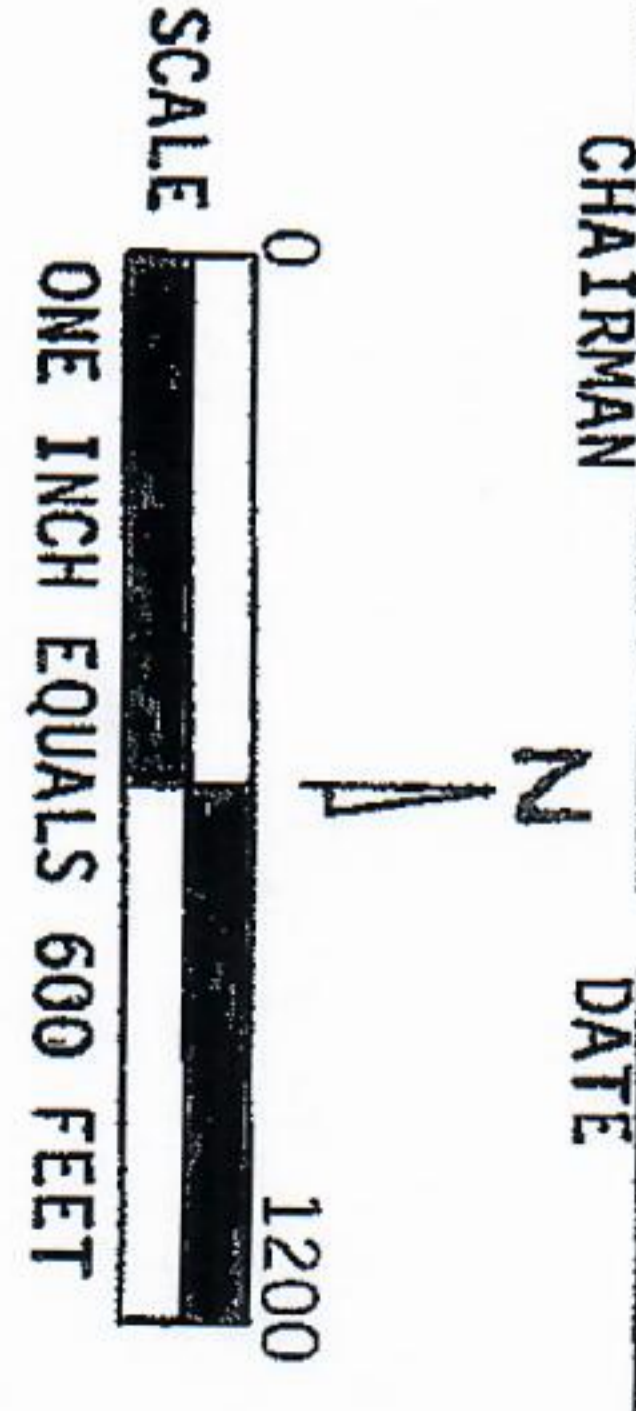
**LEGEND**

- COUNTY LINE 
- CORPORATE LIMITS 
- STATE TRUNKLINE 
- COUNTY PRIMARY 
- COUNTY LOCAL 
- ADJACENT COUNTY 
- CITY OR VILLAGE 
- STREET 

TOTAL FEET 2100 ft. EQUALS .40 MI.

I HEREBY CERTIFY THAT THE ROADS SHOWN HEREON BY SYMBOL AS LOCAL ROADS ARE IN USE AND UNDER THE JURISDICTION OF THE COUNTY ROAD COMMISSION.

CHAIRMAN \_\_\_\_\_ DATE \_\_\_\_\_



TOWNSHIP \_\_\_\_\_ LAKE \_\_\_\_\_  
 SECTION 27  
 COUNTY \_\_\_\_\_ MISSAUKEE \_\_\_\_\_